





90

100

110

120

10

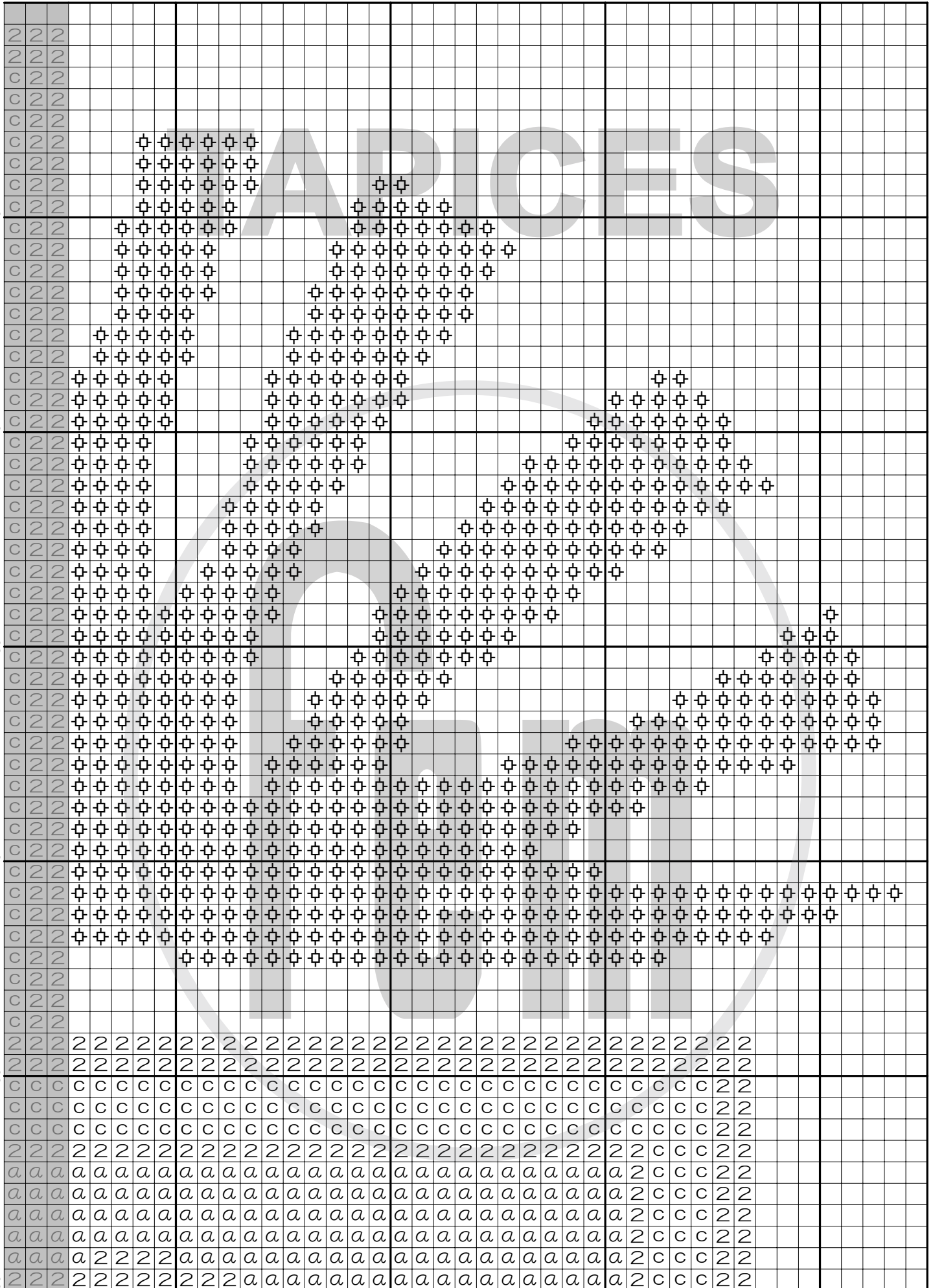
20

30

40

50

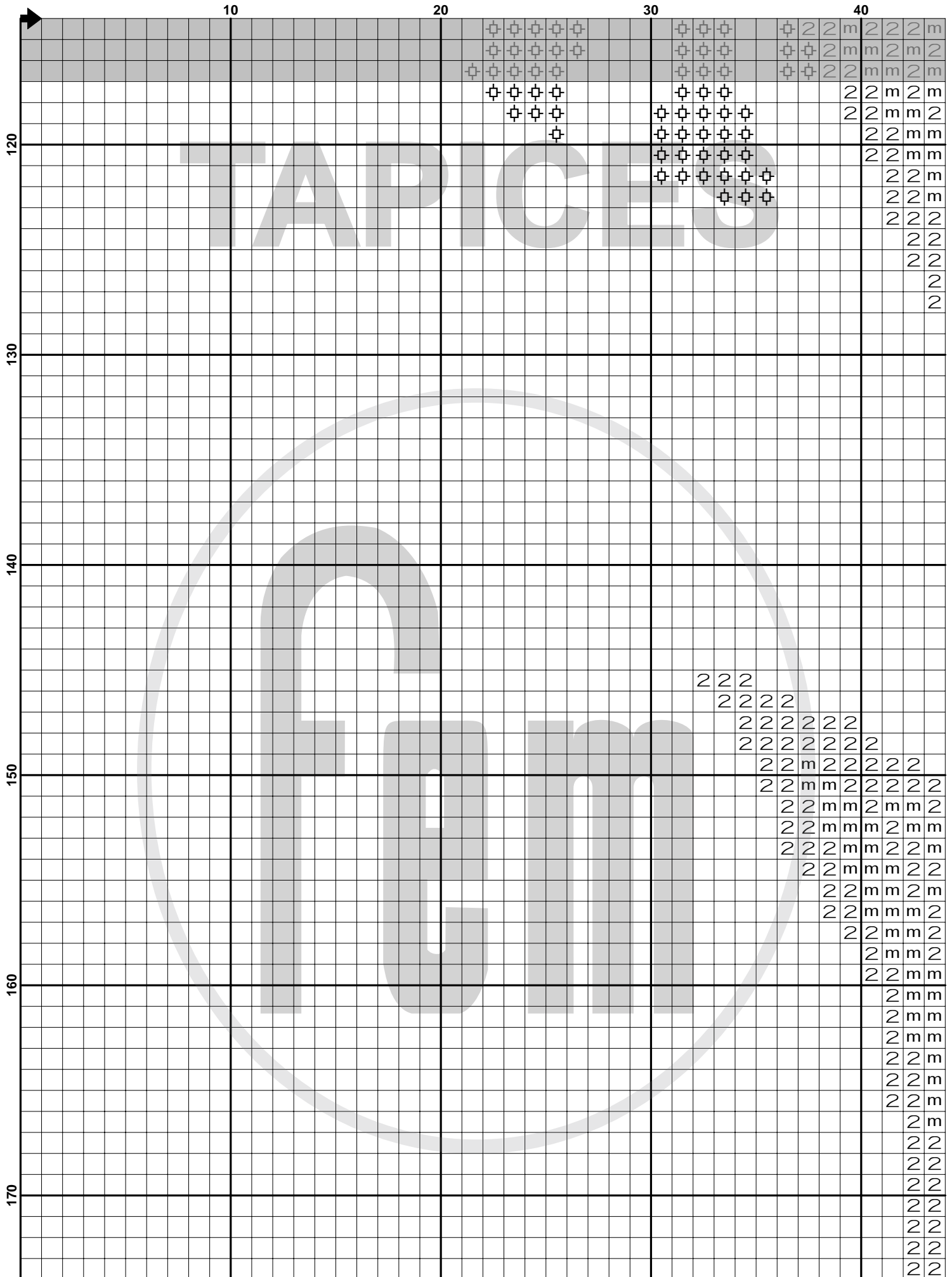
60



















10

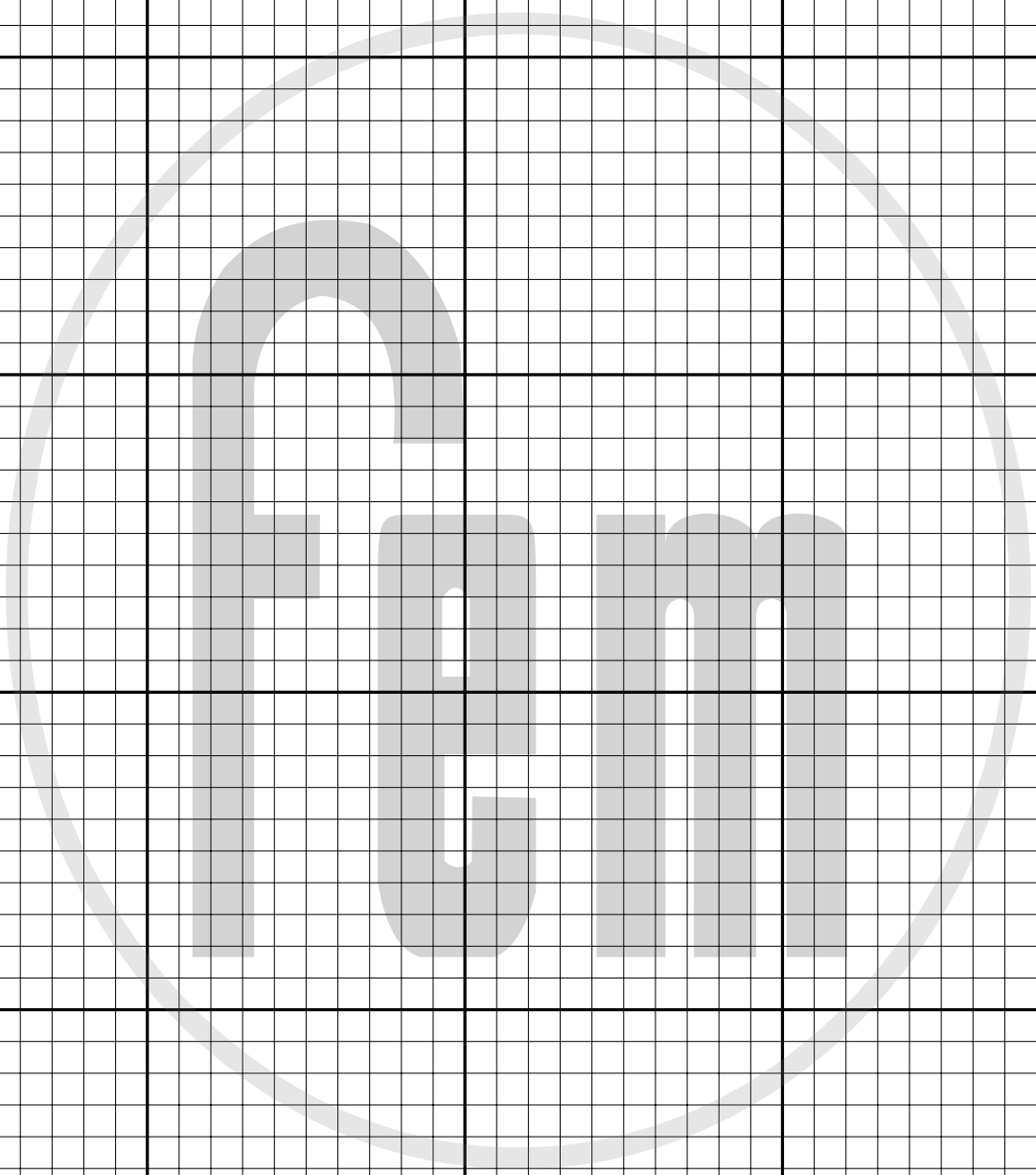
20

30

40

2 2  
2 2  
2 2  
2  
2  
2  
2  
2

TAPICES



180

190

200

210

220





**Pattern Name:** Cruz con flor-9  
**Designed By:** www.tapicesfem.com  
**Company:** argentina@tapicesfem.com  
**Fabric:** Aida 14, White  
 125w X 228h Stitches  
**Size:** 14 Count, 22.68w X 41.37h cm

**Floss Used for Full Stitches:**

Symbol	Strands	Type	Number	Color
2	2	DMC	310	Black
a	2	DMC	434	Brown-LT
m	2	DMC	503	Blue Green-MD
+	2	DMC	973	Canary-BRT
\$	2	DMC	3823	Yellow-UL Pale
⊕	2	DMC	3843	Electric Blue
e	2	DMC	3852	Straw-VY DK
c	2	DMC	3859	Rosewood-LT
	2	DMC	B5200	Snow White



**Usage Summary****Strands Per Skein:** 6**Skein Length:** 795.0 cm

Type	Number	Full	Half	Quarter	Petite	Back(cm)	Str(cm)	Spec(cm)	French	Bead	Skein Est.
■ DMC	310	4666	0	0	0	0.0	0.0	0.0	0	0	2.000
■ DMC	434	3229	0	0	0	0.0	0.0	0.0	0	0	2.000
■ DMC	503	1467	0	0	0	0.0	0.0	0.0	0	0	1.000
■ DMC	973	1023	0	0	0	0.0	0.0	0.0	0	0	1.000
■ DMC	3823	1093	0	0	0	0.0	0.0	0.0	0	0	1.000
■ DMC	3843	2298	0	0	0	0.0	0.0	0.0	0	0	1.000
■ DMC	3852	93	0	0	0	0.0	0.0	0.0	0	0	1.000
■ DMC	3859	829	0	0	0	0.0	0.0	0.0	0	0	1.000
□ DMC	B5200	13434	0	0	0	0.0	0.0	0.0	0	0	6.000

